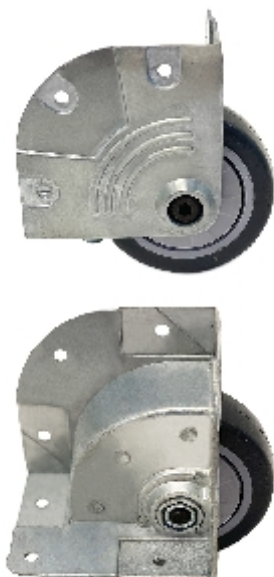


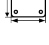
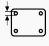




Fixe:

118a 820 799



## Caractéristiques techniques

|                                |   |                                  |
|--------------------------------|---|----------------------------------|
| Diamètre                       |    | 76 mm                            |
| Largeur de voie                |    | 25 mm                            |
| Hauteur totale                 |    | 104,4 mm                         |
| Dimensions de la platine       |    | 81,4 x<br>65,3 mm                |
| Diamètre des trous de fixation |    | 5,2 mm                           |
| Entraxe des trous de fixation  |    | 34 x 50 +<br>40,71 x<br>40,71 mm |
| Capacité de charge             |  | 50 kg                            |
| Poids                          |  | 430 g                            |